



**ALL PRICES GST INCLUSIVE** prices and offers subject to change without notice  
**OFFERS ARE NOT VALID IN CONJUNCTION WITH ANY OTHER SPECIAL/BONUS OFFERS AND SUBJECT TO STOCK AVAILABILITY**  
*Goods sold are not returnable without prior approval. Returns and claims must be made within 10 days of delivery. Costs incurred by return goods will be at the sender's expense. Goods returned for credit or exchange must be unmarked and in a saleable condition.*  
*All accounts are strictly 30 days from invoice date. We reserve the right to charge 2% interest per month on overdue accounts.*



## SHOFU PORCELAIN VENEER KIT

Designed by Dr. George A. Freedman, this kit contains an optimal selection of instruments to assist the practitioner in all aspects of porcelain veneer placement: one regular-grit and two fine grit FG Robot diamond points, three T&F-grit Hybrid points, two CA Dura-White stones, six CA Ceramiste points, and two CA Ceramisté cups.

0300 Kit RA/FG ... \$126.50

## SHOFU PORCELAIN LAMINATE POLISHING KITS RA/FG



Designed by Dr. Ronald E. Goldstein, this kit has fourteen assorted Ceramisté cup and Midi-point shapes for complete polishing.

0317 Kit RA ... \$88.55  
 0318 Kit FG ... \$88.55

## SHOFU COMPOSITE FINISHING KITS RA/FG



0306 Kit RA ... \$68.75  
 0302 Kit FG ... \$68.75

This kit is designed for finishing interproximal and subgingival composite fillings. It has six Dura-Green and six Dura-White stones in CN1 and FL2 shapes.

## SHOFU COMPOSITE POLISHING KIT RA



0310 Kit RA \$68.75

This kit is designed for finishing and polishing all types of composite materials. It has two Dura-Green and two Dura-White stones, six CompoSite points, and one each Composite Fine cup and disk.

## SHOFU 0509 SUPER-SNAP EXTREME MINI KIT



- No metal centre, will not gouge or discolour composite
- For safe, fast polishing without changing or inverting discs
- Improved mandrel design

0509 Super Snap Extreme Mini Kit CA ... \$49.50

## SHOFU AMALGAM POLISHING KITS



These abrasives are impregnated with polishing ingredients to provide fast, brilliant results without pumice or tin oxide. The kit includes three each Brownie cups and mini-points, two each Greenie cups and mini-points, one each Supergreenie cup and mini-point. Cups are for proximals, Mini points for occlusals.

0308 Kit RA ... \$68.75  
 0309 Kit FG ... \$68.75

## SHOFU GOLD POLISHING KIT HP/RA



For finishing and superpolishing cast gold/precious alloys, this kit includes six Brownie, three Greenie and three Supergreenie polishing points in KN7, PC2 and WH6 shapes.

0303 Kit HP ... \$68.75

## SHOFU ENAMEL AND PORCELAIN ADJUSTMENT KITS HP/RA



The Enamel Adjustment Kit has three Dura-White stones for adjusting natural dentition and porcelain and nine Ceramisté points for intra-oral polishing. The Porcelain Adjustment Kit has three Dura-White stones for adjusting and nine Ceramisté points for polishing at chairside.

0307 Enamel Kit RA ..... \$68.75  
 0301 Porcelain Kit HP .. \$68.75

## SHOFU ACRYLIC CONTOURING AND FINISHING KIT HP



- Design for adjustment and polishing of acrylic dentures and appliances chairside or in the laboratory
- The kit includes 8 Silicone Acrypoints and 4 Robot Carbide Burs for fast, smooth adjustment and polishing

0329 Acrylic Kit HP ... \$165.00





## SHOFU DIAMOND BURS FG

### MULTI-COATING TECHNIQUE

Shofu Diamond Points utilize multi-coating techniques with a special surface treatment for durability and less clogging, while maintaining cutting efficiency.



### GENTLE ON THE H/P CARTRIDGE

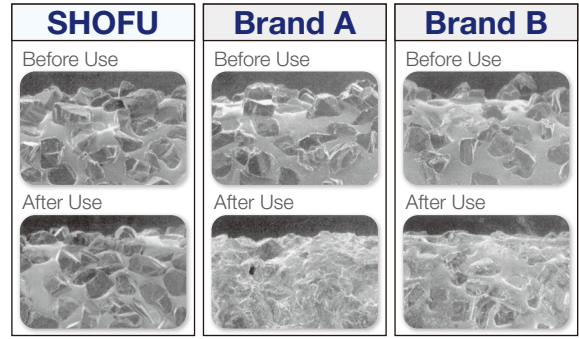
Every Shofu Diamond Point has a very smooth shank and conforms strictly to the ISO standards and specifications in order to ensure precise fitting to the handpiece cartridge

### SHOFU DIAMOND POINTS FG

are made by highly technological robots under a computer automated environment that is untouched by human hands.

Due to this technology every Diamond Point is guaranteed to have an even distribution of natural diamond particles over the working length of a single piece shank made of the highest quality stainless steel. This provides even and effortless cutting.

Comparison on the distribution of Diamond particles and clogging after use

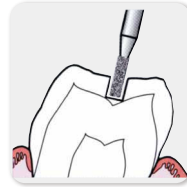


\* Tested by Shofu Inc. Research and Development Department

**CYLINDER ROUND EDGE**

Medium (115 microns)

Standard Order No.	411	411M	311	211	311RM	214	114S	114	SF114
Short Shank Order No.	1411								
ISO Size 1/10 mm	011	010	013	014	013	012	010	012	013
Length (mm)	4	3	4.5	7	4.5	5	8	8	8
Each	\$4.95	\$4.95	\$4.95	\$6.60	\$6.60	\$6.60	\$6.60	\$6.60	\$6.60



for cavity and inlay preparations

**ROUND** Medium (115 microns)

**PEAR** Superfine (25 microns)

Standard Order No.	440SS	440S	440	340	461R	462R	364R	SF440
Short Shank Order No.			1440	1340				
ISO Size 1/10 mm	010	013	015	018	009	011	015	015
Length (mm)	0.9	1.2	1.3	1.6	2	1.7	4.5	1.3
Each	\$4.95	\$4.95	\$4.95	\$4.95	\$4.95	\$4.95	\$6.60	\$6.60



for cavity preparations

**INVERTED CON** Medium (115 microns)

**DOUBLE INVERTED CONE**

Standard Order No.	421M	421	321M	321	421SS	421S	321S
Short Shank Order No. <td></td> <td>1421</td> <td></td> <td></td> <td>1421SS</td> <td></td> <td>1321S</td>		1421			1421SS		1321S
ISO Size 1/10 mm	010	015	016	018	010	014	016
Length (mm)	1	1.5	1.4	1.7	2.2	3.5	3.5
Each	\$4.95	\$4.95	\$4.95	\$4.95	\$4.95	\$4.95	\$4.95



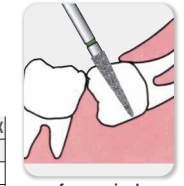
for minimal invasion

**MICRO DENTISTRY** Fine (60 microns)

Standard Order No.	440SS	440S	440	461R	F440R
Short Shank Order No. <td></td> <td></td> <td>1440</td> <td></td> <td></td>			1440		
ISO Size 1/10 mm	010	013	015	009	007
Length (mm)	0.9	1.2	1.3	2	0.7
Each	\$4.95	\$4.95	\$4.95	\$4.95	\$6.60

**EXTRA LONG SHANK** Coarse (135 microns)

Standard Order No.	C104LL	C165R	C101X	C103X	C105RX
Short Shank Order No. <td></td> <td></td> <td></td> <td></td> <td></td>					
ISO Size 1/10 mm	022	025	017	023	023
Length (mm)	10	7	10	10	12
Each	\$7.70	\$7.70	\$7.70	\$8.80	\$8.80



for surgical

**FINISHING** Superfine (25 microns)

Standard Order No.	SF217	SF318	SF319	SF416	SF313R	SF219	SF265R
Short Shank Order No. <td></td> <td></td> <td></td> <td></td> <td></td> <td></td> <td></td>							
ISO Size 1/10 mm	017	023	014	016	016	019	020
Length (mm)	6	2	3.4	4	3.3	5	5
Each	\$6.60	\$6.60	\$6.60	\$6.60	\$6.60	\$8.25	\$8.25



for finishing filling materials

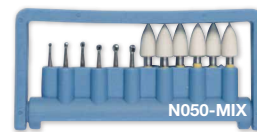
**Buy 5 pieces of Shofu Diamond Burs FG (any mix) get one N050 Bur Dispenser (FG or MIX) FREE**  
[ for Bur Dispenser details, please refer to below ]  
**or Buy 5 get 1 FREE (same number)**

**TISSUE PROTECTIVE END CUTTING** Coarse (135 micron) Fine (60 microns)

Standard Order No.	680C	682C	684C	680F	682F	684F
Short Shank Order No. <th>682S</th> <th>684S</th> <td></td> <td></td> <td></td> <td></td>	682S	684S				
ISO Size 1/10 mm	010	012	014	010	012	014
Length (mm)	9	9	9	9	9	9
Each	\$8.25	\$8.25	\$8.25	\$8.25	\$8.25	\$8.25



for shoulder preparations



**AUTOCLAVABLE PLASTIC BUR DISPENSERS**

- Specially designed for cleaning and autoclaving of burs
- Locks open or closed for processing
- Medical grade plastic, autoclavable up to 134°C
- Size: 75 mm x 35 mm x 10 mm

N050-FG, Bur Dispenser 12 FG ... \$16.50

N050-MIX Bur Dispenser 6 FG + 6 RA ... \$16.50

COLOURS	Blue
Light Blue	Green
Yellow	White
Light Beige	Lavender

## SHOFU HYBRID DIAMOND BURS FG (in Carbide Bur Shapes) REGULAR (115 microns)

Order No.	0901	0903	0905	0907	0909	0911	0913	0915	0917	0919	0921	0923
Carbide Shape	2	4	6	34	35	245	331	556/56	557/57	558/58	700/170	701/171

Hybrid Regular Diamond Bur FG ... \$4.95

## SHOFU HYBRID T&F DIAMOND BURS FG (in Carbide Bur Shapes) SUPERFINE (25 microns)

Order No.	0925	0927	0929	0931	0933	0935	0937	0939	0941	0943
Carbide Shape	7006	7104	7106	7404	7406	7803	7901	7903	LT1	LT2

Hybrid T&F Diamond Bur FG ... \$8.80



**SHOFU ALL CERAMIC PREPARATION SET FG**

0955 All Ceramic Preparation Set FG \$165.00

The demand for ceramics in dentistry is at an all time high. Newer ceramic materials available today produce superb ceramic restorations. This is challenging the dental professional to consider newer materials, aesthetics, function, and clinical expertise when preparing an all ceramic restoration. Under the guidance of Dr. Takao Maruyama of Osaka University, Dr. Yoshihiko Mutobe and Shofu have developed a new all ceramic preparation system utilizing ceramic diamond burs to prepare an all ceramic restoration.



**SHOFU DIAMOND BURS FG**

TAPERED FLAT END

Coarse (135 microns) Medium (115 microns)

Standard Order No.	C101	C202
Short Shank Order No.		
ISO Size 1/10 mm	017	022
Length (mm)	10	5
Each	\$7.70	\$8.80

Standard Order No.	401M	401	301	301M	201S	201	101S	101	101SR	101L	202	202S	103
Short Shank Order No.			1301			1201		1101		1101L			
ISO Size 1/10 mm	010	011	016	013	014	016	014	016	014	018	021	017	022
Length (mm)	3	4	4.5	4	7	7	10	10	10	10	5	5	9
Each	\$4.95	\$4.95	\$4.95	\$4.95	\$6.60	\$6.60	\$6.60	\$6.60	\$6.60	\$7.70	\$8.25	\$7.70	\$8.80

Superfine (25 microns)

Standard Order No.	SF201	SF101
Short Shank Order No.		SF1101
ISO Size 1/10 mm	015	015
Length (mm)	7	10
Each	\$6.60	\$6.60



for crown and bridge preparations

**Buy 5 get 1 FREE**  
(same number)

**DIRECT COSMETIC RESTORATION KIT (for tooth preparation & finishing)**



- Specially designed under guidance of Dr. Sushil Koirala with 8 carefully selected Diamond Burs FG No. M12P, 3045, 121, 102R, F216, SF104R, SF215 and SF219
- Diamond points are hygienically organized in an aluminium bur block for convenient sterilization and easy replacement

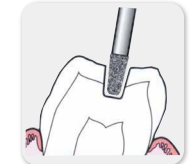
F272  
Direct Cosmetic Restoration Kit FG  
\$88.55

Medium (115 microns)  
TAPERED FLAT END ROUND EDGE

Standard Order No.	301CR	202CR	201CR	101CR	103CR	206CR	207CR
ISO Size 1/10 mm	018	021	018	019	023	027	031
Length (mm)	4	5	7	10	10	3.5	3.5
Each	\$7.70	\$7.70	\$7.70	\$8.25	\$8.80	\$9.90	\$11.55

Superfine (25 microns)

Standard Order No.	SF301CR	SF202CR	SF201CR	SF101CR	SF103CR	SF206CR	SF207CR
ISO Size 1/10 mm	018	021	018	019	023	027	031
Length (mm)	4	5	7	10	10	3.5	3.5
Each	\$8.25	\$8.25	\$8.25	\$8.25	\$8.80	\$9.90	\$11.55



for hard resin and ceramic inlay preparations

Coarse (135 microns) Medium (115 microns)  
TAPERED ROUND END

Standard Order No.	C102R	102R	103R	105R	106RD	107RD	F102R	F105R	SF102R	SF102RD	SF106RD	SF107RD
ISO Size 1/10 mm	018	017	022	022	021	023	016	021	016	018	021	023
Length (mm)	9	9	9	11.5	9	9	9	11.5	9	9	9	9
Each	\$7.70	\$7.70	\$8.80	\$8.80	\$8.25	\$8.80	\$5.50	\$8.25	\$7.70	\$8.25	\$8.25	\$8.80

Fine (60 microns) Superfine (25 microns)

Standard Order No.	F102R	F105R	SF102R	SF102RD	SF106RD	SF107RD
ISO Size 1/10 mm	016	021	016	018	021	023
Length (mm)	9	11.5	9	9	9	9
Each	\$5.50	\$8.25	\$7.70	\$8.25	\$8.25	\$8.80



for crown and bridge preparations (heavy chamfer)

Superfine (25 microns)

Standard Order No.	SF151
ISO Size 1/10 mm	028
Length (mm)	5.5
Each	\$11.55

redundant gap is generated around the incisal edge and angles

Medium (115 microns)  
TAPERED ROUND END ELLIPSE

Standard Order No.	201SR	201R	104R	101R	F201R	F104R	SF104R
Short Shank Order No.		1201R	1104R	1101R			
ISO Size 1/10 mm	014	016	016	016	015	015	015
Length (mm)	7	7	10	10	7	10	10
Each	\$6.60	\$6.60	\$6.60	\$6.60	\$6.60	\$6.60	\$6.60



C & B Preparation Set FG ... \$165.00

**SHOFU CROWN & BRIDGE PREPARATION SET**

- Designed by experts in the field of restorative dentistry to provide efficiency and accuracy during crown and bridge preparation
- Speedy, simple and accurate tooth preparation can be done with 14 kinds of specially selected FG Diamond Points
- Usable for a wide range of crown and bridge preparation work such as, PFM of full metal crowns and bridges, full ceramic restorations, Veneers, Inlays and Onlays
- The Diamond Points are hygienically organized in an autoclavable aluminum bur block for convenient sterilization and replacement

Medium (115 microns)  
NEEDLE

Standard Order No.	304	204	104	104L	246	F204	F104	SF204
Short Shank Order No.		1204	1104					
ISO Size 1/10 mm	016	013	016	018	033	012	015	010
Length (mm)	6	8	10	10	4	8	10	8
Each	\$4.95	\$6.60	\$6.60	\$6.60	\$11.55	\$6.60	\$6.60	\$6.60



for C & B preparations (feather margin)

Medium (115 microns)  
FLAME

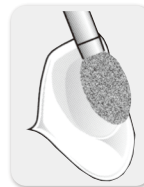
Standard Order No.	316	215S	215	216	115	116	F215	F216	SF215
Short Shank Order No.									
ISO Size 1/10 mm	013	012	014	017	013	015	013	016	012
Length (mm)	4	7.5	7.5	7.5	10	10	7.5	7.5	7.5
Each	\$6.60	\$6.60	\$6.60	\$6.60	\$6.60	\$6.60	\$6.60	\$6.60	\$6.60



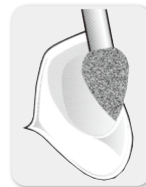
for C & B preparations (knife edge margin)

Medium (115 microns)  
LINGUAL REDUCTION

Standard Order No.	319	265R	165R	144	117	145	SF217	SF219	SF265R	SF145	SF416
ISO Size 1/10 mm	019	021	025	032	032	029	017	019	020	029	016
Length (mm)	3.4	5	7	5	5	4.9	6	5	5	4.9	4
Each	\$7.70	\$8.25	\$9.90	\$11.55	\$11.55	\$9.90	\$7.70	\$7.70	\$8.25	\$9.90	\$6.60



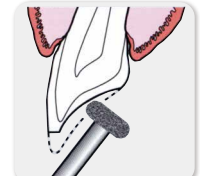
for C & B preparations (lingual reduction)



for C & B preparations (lingual reduction)

Medium (115 microns)  
WHEEL

Standard Order No.	330	130	111
ISO Size 1/10 mm	025	050	045
Length (mm)	0.5	0.7	1.7
Each	\$9.90	\$11.55	\$11.55



for C & B preparations (lingual reduction)

Medium (115 microns)  
BARREL

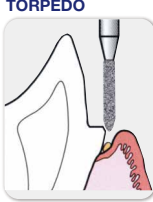
Standard Order No.	148	149
ISO Size 1/10 mm	032	039
Length (mm)	5	4
Each	\$11.55	\$11.55



For C & B preparations (occlusal reduction)

Medium (115 microns)  
TORPEDO

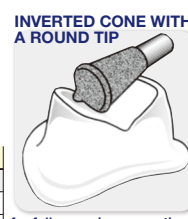
Standard Order No.	212R	213R
ISO Size 1/10 mm	010	012
Length (mm)	6	8
Each	\$6.60	\$6.60



for beveling

Medium (115 microns) Superfine (25 microns)  
INVERTED CONE WITH A ROUND TIP

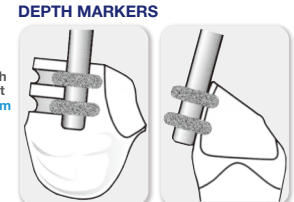
Standard Order No.	150	SF150
ISO Size 1/10 mm	035	035
Length (mm)	5.7	5.7
Each	\$11.55	\$11.55



for full ceramic preparations (occlusal reduction)

Medium (115 microns)  
DEPTH MARKERS

Standard Order No.	121	122
ISO Size 1/10 mm	026	036
Length (mm)	3.6	4
Each	\$9.90	\$11.55



for depth cutting



## SHOFU 0950 HYBRID T & F KIT FG

- 25 micron trimming & finishing diamond burs FG for composites, enamel and porcelain

0950 Hybrid T & F Kit FG ... \$88.55

## SHOFU COMPOSITE FINISHING KITS CA/FG



0306 Kit RA ... \$68.75  
0302 Kit FG ... \$68.75

This kit is designed for finishing interproximal and subgingival composite fillings. It has six Dura-Green and six Dura-White stones in CN1 and FL2 shapes.

## SHOFU COMPOSITE POLISHING KIT CA



0310 Composite Polishing Kit RA \$68.75

This kit is designed for finishing and polishing all types of composite materials. It has two Dura-Green and two Dura-White stones, six CompoSite points, and one each Composite Fine cup and disk.



0322 Composite Technique Kit CA 12 pcs/box \$88.55

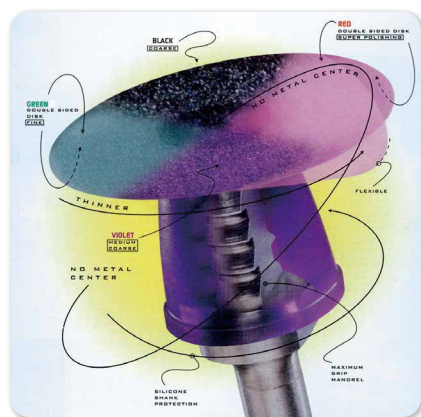
## SHOFU COMPOSITE POLISHERS CA

Shape	Bullet	Knife	Wheel	Disk	Cup	Pear	Inverted Cone	Midi	actual size
CompoSite Polisher RA Aluminium oxide (40 µm)	0191RA	0192RA	0193RA	0194RA	0195RA	0196RA	0197RA	0198RA	
CompoSite Polisher FG Aluminium oxide (40 µm)						196BFG		0199FG	
CompoSite Fine Polisher RA Zirconium (20 µm)	0291RA	0292RA	0293RA	0294RA	0295RA	0296RA	0297RA	0298RA	
CompoSite Fine Polisher FG Zirconium (20 µm)						296BFG		0299FG	

Composite Silicone Points RA/FG 12 pcs/box \$68.75

**Specification:**  
Available in two grits and 8 different shapes as follow:  
CompoSite Polisher – Aluminium oxide (approx. 40 microns)  
CompoSite Fine Polisher – Zirconium (approx. 20 microns)  
shank marked with colour band

**Indication:** For perfect polishing of anterior and posterior composite restorations without scratching surrounding tooth structure. Final polishing can be obtained easily without ditching the restorative material.



## The new improved Super-Snap system has made an evolution to perfection

The number of polishing steps has been reduced and the range of grits has been expanded. For optimal safety in polishing, the disks **do not have metal centres**, and the shanks are protected for maximum safety when working interproximally. The final polishing disks are double-sided, giving you maximum convenience and performance. The redesigned mandrel holds the disks firmly to ensure a safe grip. Finishing and polishing of composite has never easier and now Super Snap Ultra-thin, colour-coded disks indicate the grit and function to take you step-by-step to the finest restorations you can achieve. In addition, colour-coded polystrips have been added to complete the evolution of the new Super Snap Technique Kit.

- **Thin, double-sided Disks (only for fine & super fine grits)**  
For safe, fast polishing without changing or inverting discs
- **Improved Mandrel Design**  
Holds disks firmly for maximum control
- **No Metal Centre**  
Will not gouge or discolour composite
- **New Black Coarse Disks**  
Uniform (coarse grit) particles for fast, smooth composite contouring.
- **Thin Polystrips**  
Interproximal finishing and polishing strips. Colour coded: **Black/Violet (Coarse/Medium grits)** **Green/Red (Fine/Superfine grits)**
- **New Kit Design**  
Semi-circular design for convenient access and easy identification of different grits of disks & strips.
- **More Disks**  
New 0500 full kit contains 180 Disks

SHAPE CATEGORY	Contouring		Finishing				extra thickness	Polishing		Super-Polishing	
Super-Snap Shape											
Colour/Grit	Black (coarse)		Violet (medium)				Green (fine)		Red (super fine)		
Refills (50 pcs/box) PN	L506	L507	L508	L528	L509	L522	L511	L531	L512	L532	



## Super-Snap X-TREME (extra thickness) Mini Kit

48 x Disks  
1 x Composite Fine Midi-Point CA  
1 x Super-Snap CA Mandrel

0509 Super-Snap X-TREME Mini Kit each \$49.50

Super-Snap Refills 50 pcs/box ... \$33.00

0439 Super-Snap Mandrels 6 pcs/box ... \$49.50





**SHOFU DURA-WHITE® STONES RA / FG**

RA/HP SHAPES

Shape	CN1	FL1	FL2	FL3	IC4	RD1	RD2	RE1	TC1	TC4
RA Order No	0221	0222	0223	0224	0225	0227	0228	0229	0230	N/A
HP Order No	0201	N/A	0203	0204	N/A	0207	0208	0209	0210	0211

actual size

FG SHAPES

Shape	CN1	FL1	FL2	RD1	RD2	TC1
FG Order No	0241	0240	0244	0247	0248	0249

actual size

For fine finishing enamel, composites and porcelain, nothing exceeds the performance of the Dura-White Stones. Made of micrograined aluminium oxide grits, each stone is perfectly balanced to provide vibration-free performance.

Dura White Stones RA or FG  
12 pcs/box ... \$44.55

**SHOFU CeraMaster® AND CompoMaster® THE NEW DIAMOND IMPREGNATED POLISHERS HP / RA**

CompoMaster for Composite

Shape	Bullet	Knife	Cup	Mini-Point	KN7	WH6
Finishing Coarse (yellow band)	RA Order No.	0111C	0112C	0113C	0114C	
	HP Order No.	0116C			0119C	0117C
Finishing and polishing (yellow and white band)	RA Order No.	0111	0112	0113	0114	
	HP Order No.	0116			0119	0117

actual size

CeraMaster for Ceramic

Shape	Bullet	Knife	Cup	Mini-Point	KN7	WH6
Finishing Coarse (blue band)	RA Order No.	0121C	0122C	0123C	0124C	
	HP Order No.	0126C			0129C	0127C
Finishing and polishing (blue and white band)	RA Order No.	0121	0122	0123	0124	
	HP Order No.	0126			0129	0127

actual size

- Specific designs for polishing porcelain and composite restorations
- Unique blend of silicone and diamond
- A choice of shapes to suite the polishing of all surfaces
- CA and HP shanks for chairside or laboratory use
- A glaze-like polish to porcelain restorations
- A faster and easier method of polishing
- The elimination of expensive and messy polishing pastes
- Cost-effective, long-lasting durable heads.

CompoMaster RA Single Shape, 3 pcs/box .. \$79.95  
 CompoMaster HP Single Shape, 3 pcs/box .. \$79.95  
 CompoMaster RA Assorted, 4 pcs/box ..... \$88.55  
(one each bullet, knife, cup and mini-point)  
 CompoMaster HP Assorted, 4 pcs/box ..... \$88.55  
(one each bullet, KN7, WH6 and mini-point)

CeraMaster RA Single Shape, 3 pcs/box .. \$79.95  
 CeraMaster HP Single Shape, 3 pcs/box .. \$79.95  
 CeraMaster RA Assorted, 4 pcs/box ..... \$88.55  
(one each bullet, knife, cup and mini-point)  
 CeraMaster HP Assorted, 4 pcs/box ..... \$88.55  
(one each bullet, KN7, WH6 and mini-point)

**SHOFU ONEGLOSS ONE-STEP COMPOSITE FINISHERS AND POLISHERS**

The OneGloss system works on all composites just by altering contact pressure



THE ONEGLOSS FEATURES AND BENEFITS	
Features	Benefits
One Stop /One Step	<ul style="list-style-type: none"> <li>• Finishes &amp; Polishes in one step</li> <li>• Reduces patient chair time</li> <li>• Eliminates additional polishing steps</li> </ul>
Disposable	<ul style="list-style-type: none"> <li>• Reduces sterilization cycles</li> <li>• Reduces clean-up between patients</li> </ul>
Multi-Uses	<ul style="list-style-type: none"> <li>• Finishes &amp; Polishes composite restorations</li> <li>• Removes excess resin cement on tooth surface without marring enamel</li> <li>• Removes orthodontic cement after debanding &amp; bracket removal</li> <li>• Removes stains from teeth</li> <li>• Polishes enamel after scaling</li> </ul>

Just compare OneGloss to the competition:

- It's proven to be more durable
- It finishes and polishes better in just one-step
- It's intended for single use (but is durable enough to last through an entire treatment)
- It costs 50% less than comparable brands
- It allows you to switch from finishing to polishing by simply altering contact pressure

0180 OneGloss Complete Set CA ..... \$126.50  
(20 Cups, 20 Midi points, 20 Inverted Cone & 3 Mandrels)  
 0181 OneGloss Cup Refill 50 pcs/box ..... \$79.95  
 0182 OneGloss Midi Refill 50 pcs/box ..... \$79.95  
 0183 OneGloss Inverted Cone Refill 50 pcs/box .. \$79.95  
 0186 OneGloss Mini Point, 12 pcs/box ..... \$33.55  
 0435 One Gloss Mandrels CA 6 pcs/box ..... \$49.50

**SHOFU SILICONE MIDI-POINTS UNMOUNTED**



- For finishing enamel and composite restorations as well as stain and adhesive removal
- No metal centre, to prevent discolouring of the restoration
- Operating speed 3,000 - 10,000 r.p.m.
- Available in 25 pieces with OneGloss mandrel supplied



Silicone Points Midi Unmounted  
25 pcs/box ... \$49.50

**Buy 5 get 1 FREE**  
(same item)

**SUPER-SNAP SUPERBUFF High gloss polish in a snap, with no messy paste ... no risk of cross contamination**



0535 Super Buff Set CA ..... \$68.75  
 L523 Super Buff 25's Disk Standard ... \$33.55  
 L524 Super Buff 25's Disk Mini ..... \$33.55

**Introduction:** The final step in polishing, it provides a smooth surface with minimal secondary scratches for a natural enamel-like luster. A highly polished surface also prevents staining and plaque accumulation for a durable restoration with greater resistance to secondary caries. Super-Buff is a specially designed aluminum oxide impregnated felt disks with easy to use snap-on system for superpolishing all direct resins.

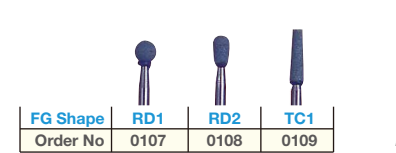
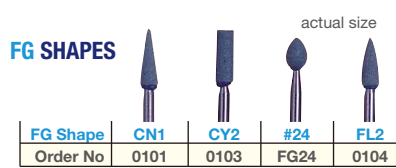
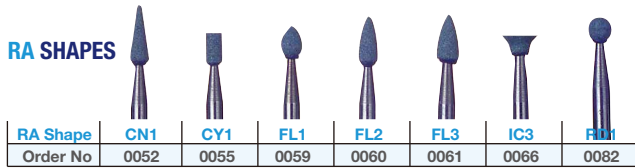
**Indication:** Developed to achieve a high gloss polishing of all types of direct tooth coloured restorations



**Benefits**

- Integrated polishing paste in the disk ensures faster polishing of restorations while keeping the work area clean
- Disks can be soaked in water until soft and flexible to activate polishing compound just before use
- Thick disk design enables super polishing of occlusal surfaces efficiently
- Able to super polish multiple surfaces in a single bound without the mess of polishing pastes

Recommended Speed: Range 8,000-12,000 rpm / Max. 15,000 rpm Contact Pressure 0.8N Usage: Moisten completely before use



## SHOFU DURA-GREEN® STONES RA / FG

Made of high quality silicone carbide grits, Dura-Green Stones are exceptional for fast contouring and finishing porcelain, composites, gold, silver and amalgam. These concentric, fast cutting stones come in CA and FG shank sizes.

Dura Green Stones RA or FG, 12 pcs/box **\$44.55**

## Gold and Precious Alloy Polishing

Shape	Mini	PC2	KN5	KN7	WH6	Floppie	
Brownies (Initial Polishing)	HP Order No.	BHP28	0272	BHP5	0271	0273	0458
	RA Order No.	0403	0282		0281	0283	
Greenies (Lustrous Polishing)	HP Order No.	GHP28	0275	GHP5	0274	0276	0459
	RA Order No.	0404	0285		0284		
Supergreenies (Super Polishing)	HP Order No.		0278		0277	0279	
	RA Order No.	404B	0288		0287		

## SHOFU BROWNIE® / GREENIE® / SUPER-GREENIE® SILICONE POINTS RA / FG / HP

Grits	Brownie	Greenie	Supergreenie	Brownie	Greenie	Supergreenie
RA Order No.	0403	0404	404B	0401	0402	402A
FG Order No.	0413	0414	414B	0411	0412	412A

Brownie / Greenie / Supergreenie, 12 pcs/box ... **\$49.50**

**For Amalgam and Cast Alloy.** Eliminate the bother of messy pumice and tin oxide. Use these popular silicone cups, points, disks and wheels that are impregnated with high quality polishing ingredients for fast, and brilliant finishes on amalgam, gold and cast alloys. Use our **Brownies** to achieve a smooth surface, **Greenies** for lustrous polish and **Supergreenies** (with yellow banded shank) for superpolish.



## SHOFU ACRYPOINT HP for acrylic polishing

**Quality Features:** Silicone polishers for finishing of denture materials

**Dentist:** Polishing after contouring adjustments on acrylic dentures

**Technician:** Polishing acrylic dentures in critical areas (i.e. palatal arch) and at acrylic to metal junction

Shape	BP1	PC2
Coarse (Dark Grey)	0426	0423
Medium (Brown)	0427	0424
Fine (Light Grey)	0428	0425

Acrypoint BP1 HP 6 pcs/box ..... **\$68.75**  
Acrypoint PC2 HP 12 pcs/box .. **\$68.75**



**Buy 5 get 1 FREE**  
(same item)

## SHOFU CERAMISTE SILICONE POINTS RA / FG / HP

Shape	Bullet	Knife	Wheel	Cup	Midi-Point
Standard (Pre-polishing)	Order No. RA0251	RA0252	RA0253	RA251A	RA253A
Ultra (Polishing)	Order No. RA0254	RA0255	RA0256	RA254A	RA256A
Ultra II (Final Polishing)	Order No. RA0257	RA0258	RA0259	RA257A	RA259A

Shape	Cup	Midi-Point	KN7	PC2	WH6
		FG253B	HP0261	HP0262	HP0263
		FG256B	HP0264	HP0265	HP0266
	FG257B	FG259B	HP0267	HP0268	HP0269

Ceramisté Points  
12 pcs/box  
**\$68.75**

**For Porcelain and Enamel.** Made specifically for finishing and polishing porcelain and enamel, **Ceramisté** points, cups and wheels provide the best in silicone technology. In grit gradation, our **Standard** points are for finishing, **Ultra** points (yellow band) for polishing and **Ultra II** points (white band) for superpolishing. Cups and Midi-Points come in CA and FG shanks.

## SHOFU ZILMASTER FINISHING & POLISHING KIT HP DIAMOND IMPREGNATED



S0009  
ZILMaster Kit  
**\$198.00**

A comprehensive and resilient, diamond impregnated finishing and polishing system for lab / chairside use, containing an assortment of Dura-Green DIA and colour coded **ZILMaster** Polishers in 3 distinct grits that provide the highest natural lustre on all types of modern ceramics including Zirconia and Lithium Disilicate restorations.

ZILMASTER HP / CA REFILLS					
TYPE	SHAPE	price	TYPE	SHAPE	price
Dura-Green DIA HP (diamond)	TC4	3 pcs/box <b>\$88.55</b>	ZILMaster Medium [HP Bullet, KN7, WH6, Mini Point]	HP / CA Single Size	3 pcs/box <b>\$99.55</b>
	KN7	2 pcs/box <b>\$68.75</b>		CA Assorted Sizes	4 pcs/box <b>\$115.50</b>
	WH6				
ZILMaster Coarse	HP / CA Single Size	3 pcs/box <b>\$99.55</b>	ZILMaster Fine [HP Bullet, KN7, WH6, Mini Point]	HP / CA Single Size	3 pcs/box <b>\$99.55</b>
	CA Assorted Sizes	4 pcs/box <b>\$115.50</b>		CA Assorted Sizes	4 pcs/box <b>\$115.50</b>



Chemistry Behind Every Smile



# BeutiBond™

## The Power Of One Unique Chemistry

BeutiBond is an innovative all-in-one 7<sup>th</sup> generation bonding system designed to increase efficiency and ensure a reliable bond between composite resins or **GIOMER** and natural tooth structure. The **HEMA free** formulation and incorporation of two unique adhesive monomers helps to save time, eliminate sensitivity and achieve predictable bonding with total peace of mind...

### THE POWER OF ONE

#### UNIQUE DUAL ADHESIVE MONOMERS

Ensures a strong reliable consistent bond to both enamel and dentin

#### SINGLE APPLICATION

- Eliminates guess work
- Saves chair time

#### HEMA-FREE FORMULATION

- Eliminates post-operative sensitivity
- Provides stable & durable bond
- Minimized gingival blanching

#### PPREDICTABILITY EVEN WITH THIN BONDING LAYER

- Thin bubble-free bonding layer of 5µm
- Facilitates easy adaptation of restorative

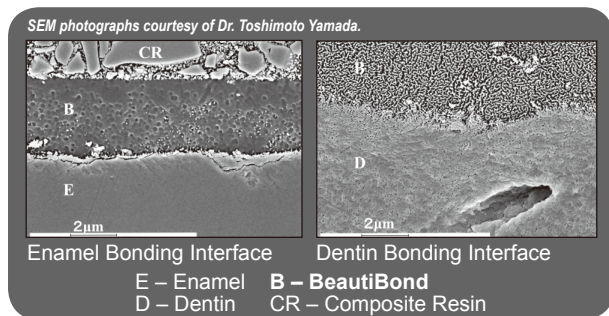


### SCIENCE BEHIND THE BOND

#### Two Powerful Adhesive Monomers

The dual adhesive monomers deliver almost equal bond strength to both enamel and dentin.

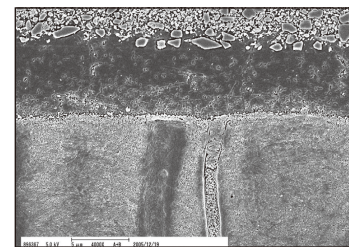
The phosphonic acid monomer of **BeutiBond** is more stable than phosphoric acid monomer which enhances bonding to tooth enamel. The carboxylic acid monomer facilitates a strong bond to dentin.



### CONVENIENCE & PREDICTABILITY

#### Thin Bonding Layer

The novel adhesive technology of **BeutiBond** creates a very thin bubble-free bonding layer of 5µm that helps to facilitate easy application of the first layer of the restorative material.



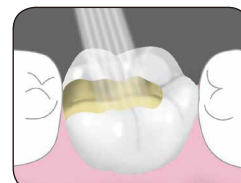
SEM photograph courtesy of Dr. Naotake Akimoto.

### Simple Application

Etch, prime and bond in **just 30 seconds** with a single application and be assured of a reliable, strong bond to both enamel and dentin.



Apply BeutiBond (5 sec).  
Leave undisturbed for 10sec.



Air-dry for 5sec to evaporate water and volatile components.  
(Gently air-dry for 3sec then air-dry with high pressure for 2sec)



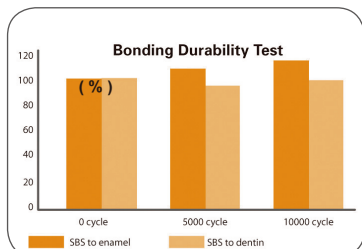
Light-Cure (Halogen: 10sec / LED: 5 sec).

### Virtually No Post-Operative Sensitivity

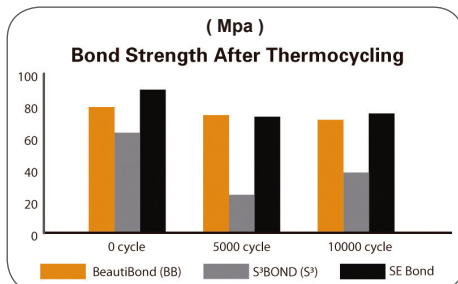
The carboxylic acid monomer in **BeutiBond** helps demineralise the smear layer without exposing the dentinal tubules which virtually eliminates post-operative sensitivity.

### Stable & Durable Bond

The **HEMA-free** formulation prevents aging caused by hydrolysis of the hybrid layer and adhesive layer to guarantee a stable bond with outstanding bonding durability.



Source – Internal data by SHOFU INC Japan.



Source – "Micro-tensile bond strength of one, two-step self-etching adhesives using novel thermal cycling method". Kawamoto Chiharu, Nagano Futami, Yasumoto Kei, Sano Hidehiko; Graduate School of Dental Medicine, Hokkaido University, Sapporo, Japan. "3<sup>rd</sup> International Congress on Adhesive Dentistry 2008".

### Guaranteed Results



Prepared cavity.



Application of BeutiBond.



Air-dried and light-cured.



Completed restoration with BEAUTIFIL II.

Photographs courtesy of Dr. Sushil Koirala.



### Order Information

BEAUTIBOND SET [PN 1781]  
BeutiBond 6 ml bottle,  
Microtip Fine (with 1 handle)  
x 50 application tips,  
V-Dish x 25

each \$126.50

Buy 5 get 1 FREE



# BEAUTIFIL II LS

A Low Shrink  
Direct Restorative

## Break through Technology

Formulated with groundbreaking SRS monomer technology, **BEAUTIFIL II LS** is a true innovation in direct resin restoration.

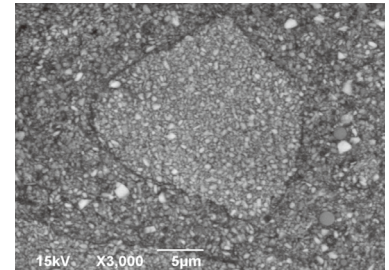
**BEAUTIFIL II LS** exhibits extremely low polymerization shrinkage and related stress while maintaining superior aesthetics, remarkable abrasion resistance, easy handling, lasting natural lustre & durability, along with its anti-plaque benefits and sustained fluoride protection for universal application.

### SRS Technology

The novel **SRS (Steric Repulsion Structured)** molecule is designed to minimize polymerization shrinkage through molecular steric repulsion resulting in a sturdy and stable restoration microstructure. It also exhibits high refractive index which matches that of the radiopaque fillers to optimize light translucency.

### Unique Pre-polymerized Filler Complex

Multifunctional organic inorganic composite filler complex with unique proprietary silanol resin formulation that imparts remarkable mechanical properties, higher wear resistance, exceptional & lasting polish.



Pre-polymerized Filler Complex

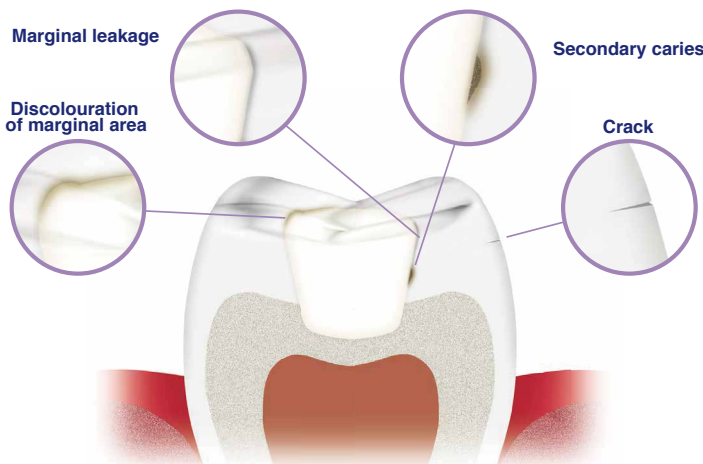
### Benefits

- Life-like Aesthetics with easy shade match
- Low volumetric shrinkage of less than 1% and low resultant shrinkage stress
- Effortless polish to a lasting natural luster
- Remarkable stain and wear resistance
- Optimal physical properties and clinical durability
- Excellent handling qualities & sculptability with long working time
- S-PRG Fillers provide anti-plaque benefits and continued fluoride protection

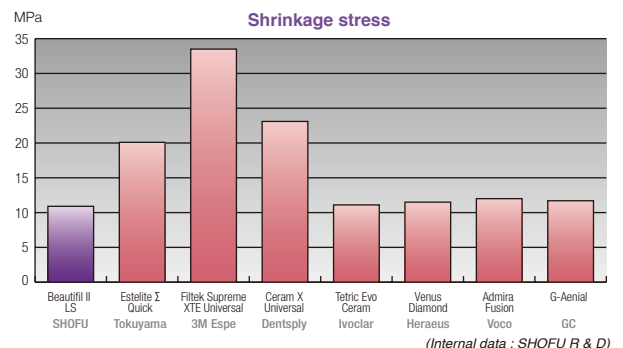
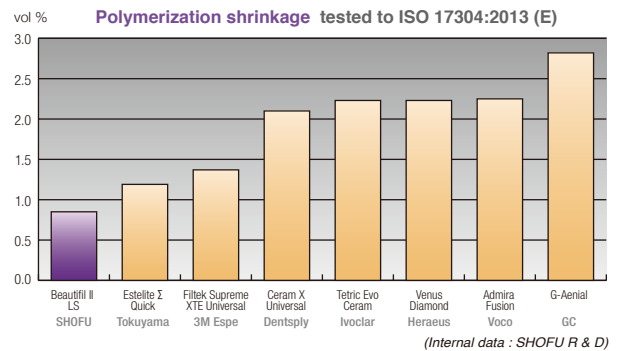
### REMARKABLE PHYSICAL PROPERTIES

#### Notably low shrinkage stress

**BEAUTIFIL II LS** filler architecture optimizes light diffusion and translucency to blend in to perfection with the patient's natural teeth shade. Natural teeth are easily simulated as dentin shades exhibit light diffusion as seen in natural dentin and the enamel shade are translucent like natural enamel.



**BEAUTIFIL II LS** helps overcome the deleterious effects of polymerization shrinkage.





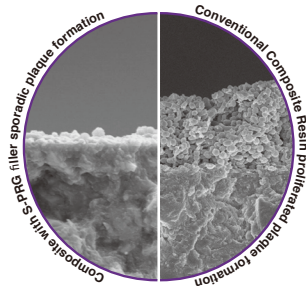


Chemistry Behind Every Smile

## BIOACTIVE BENEFITS

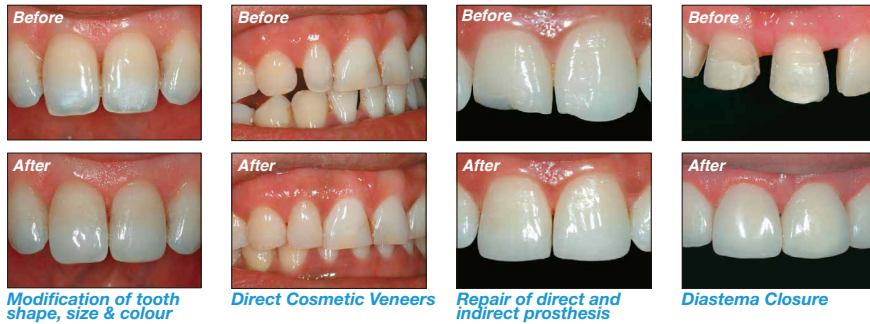
### All round protection ...

Proprietary bioactive S-PRG Fillers incorporated in **BEAUTIFIL II LS** exhibit acid-neutralizing ability to maintain an acid neutral and fluoride rich environment. Research has shown that Giomer based restorative materials including **BEAUTIFIL II LS** have an anti-plaque effect on the restoration surface for long-term protection and to prevent potential gingival irritation.



Photographs courtesy of Prof. Koji Yamamoto of the ASAHI University

Photographs courtesy of Dr. Sushil Koirala, BDS, AAAD.



Modification of tooth shape, size & colour

Direct Cosmetic Veneers

Repair of direct and indirect prosthesis

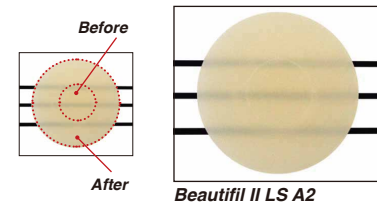
Diastema Closure

### Ideal for Restoration of

- 1) Class I through Class VI cavities
- 2) Modification of tooth shape, size & colour
- 3) Direct Cosmetic Veneers
- 4) Repair of direct and indirect prosthesis
- 5) Diastema Closure

### Exceptional Shade Stability

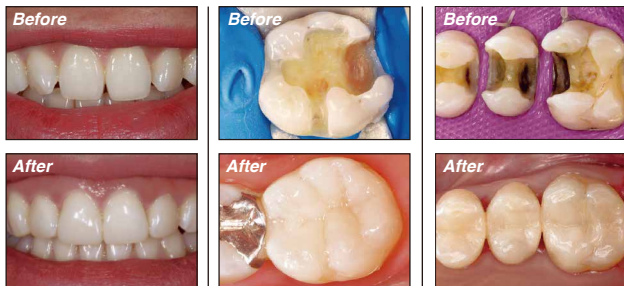
Less pre and post-cure transition in shade and translucency



## LIFE-LIKE AESTHETICS, UNPARALLELED RESULTS

### Naturally Vivid & Stable Shades

**BEAUTIFIL II LS** is formulated to simulate the optical nature of natural teeth by harmonizing light transmission and diffusion seen in dentin and enamel in any ambient light condition and even reflects natural fluorescence.



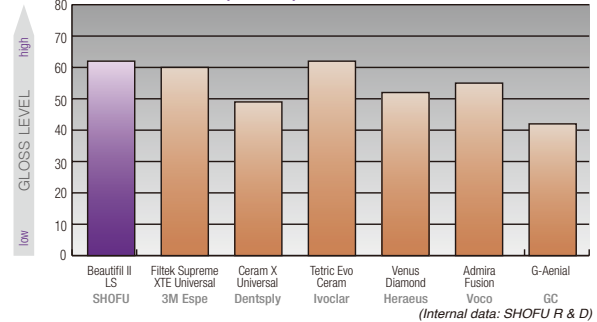
Photographs courtesy of Dr. Sushil Koirala, BDS, AAAD.

Photographs courtesy of Dr. Kozo Yoshino, Fukuishi Dental Clinic, Japan.

Photographs courtesy of Dr. Sven Rinke, Hanau, Germany.

The refractive index of the special pre-polymerized and multifunctional fillers is optimized with the resin matrix to match light translucency, hue and brightness of natural teeth.

Gloss (30 sec.) tested to ISO 2813:2014



### Sustained Surface Luster

Uniform dispersion of filler complex in **BEAUTIFIL II LS** ensures ease of polishing to a high, lasting gloss within a short time.

### EXCEPTIONAL HANDLING & SCULPTABILITY

#### Easy & Simple to adapt

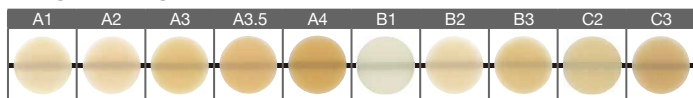
The balance of the multi-filler phase and innovative SRS monomer creates a non-tacky, moderately firm, sculptable paste that is easy to adapt, without any slump. High tolerance to ambient light facilitates longer working time to easily shape the restoration and recreate fine surface details.



### Simple & Logical Shade Spectrum

**BEAUTIFIL II LS** offers a practical shade line up that exhibits 3 levels of translucency to easily mimic the enamel as well as deep and superficial dentin layers of natural teeth.

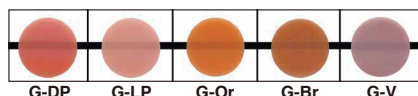
#### BEAUTIFIL II LS



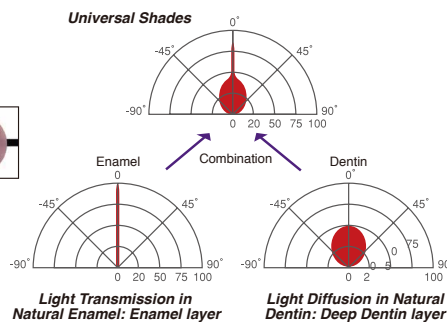
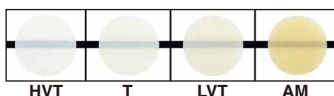
The shades A1-C3 correspond to the VITA® Classical Shades.

### Complementary Line Up

#### BEAUTIFIL II Gingiva



#### BEAUTIFIL II Enamel



#### BEAUTIFIL II LS Syringe 4 gm

STANDARD Colours:-  
A1, A2, A3, A3.5, A4, B1, B2, B3, C2, C3  
each \$59.95

SPECIAL Colours:-  
A20 (Opacous A2), A30 (Opacous A3),  
INC (Incisal), BW (Bleach White),  
Gingiva, Enamel  
each \$68.75

Buy 5  
get  
1 FREE

# BEAUTIFIL Injectable X

The One True Bioactive Injectable Restorative  
In a League of Its Own

**Boost**  
Efficiency

**Simplify**  
Restorations

**Save**  
Time

- Convenience with “Inject as you Shape”
- Save time & drive efficiency
- Bioactive nano S-PRG fillers provide lasting anti-carries benefits
- Predictable Aesthetics, Seamless shade match with self-polishing gloss
- Remarkable strength for Anterior / Posterior restorations

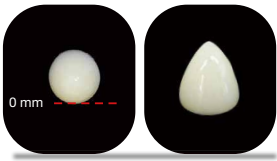


**BEAUTIFIL Injectable X** is re-engineered as the next-generation bioactive universal injectable restorative that signals a new era in restorative dentistry by offering extra strength, exceptional durability, life-like aesthetics and lasting self-polishing gloss with the unique “inject as you shape” convenience.

## Two Distinct Viscosities-Prepare >>> Inject & Shape >>> Finish

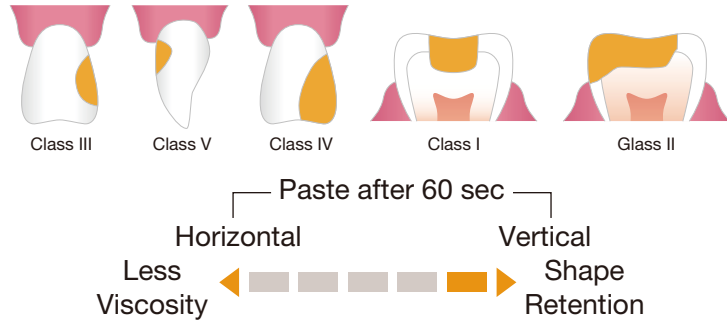
Revolutionize your daily workflow with Smart Solutions

### BEAUTIFIL Injectable X (Universal Restorative)

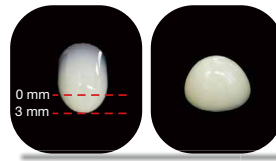


- Restoration of Anterior / Posterior teeth
    - Class I, II, III, IV, V
    - Pediatric and geriatric dentition
    - Tooth wear (Abrasion, Erosion, Abfraction)
  - Minimally invasive cosmetic restorations
  - Diastema closure
  - Tooth size and shape modification
  - Tooth surface defects
  - Smile rejuvenation
- Cuspal restoration
  - Post-ortho corrections including Black triangle closure
  - Composite Tooth Splinting
  - Repair of Composite or Ceramic restorations

### Injectable X

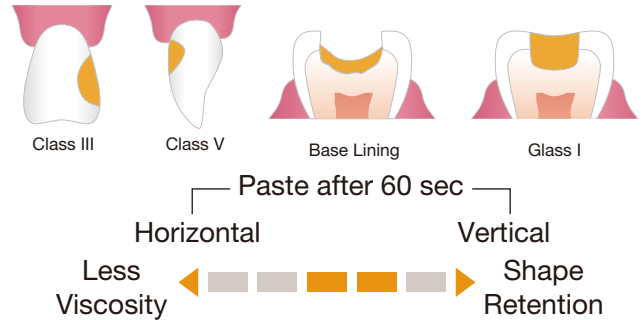


### BEAUTIFIL Injectable XSL (Self-Levelling high strength flow)



- Class III, IV, V
- Palatal shell technique
- Base & Liner
- Placement of orthodontic brackets
- Composite tooth splinting
- Restoration of tooth wear (Abrasion, Erosion, Abfraction)

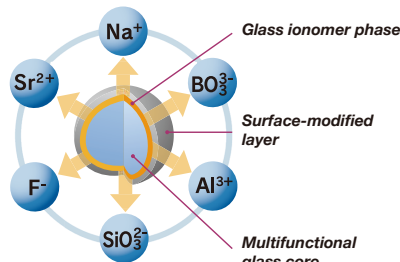
### Injectable XSL



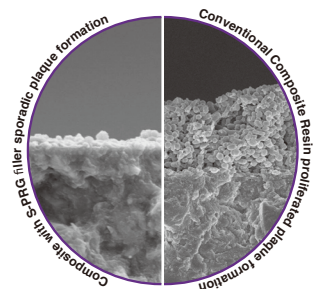
## Chemistry Behind

**BEAUTIFIL Injectable X & XSL** feature a novel filler technology that involves controlled miniaturization and uniform nano-silanzation for higher filler load and optimal filler-resin ratio for superior strength and durability.

The proprietary bioactive nano S-PRG (Surface Pre-Reacted Glass ionomer) filler technology provides an optimal balance of light transmission / diffusion for a perfect shade match and bioactive benefits. The homogenous nano-filler complex facilitates an easy and lasting self-polishing natural gloss.



\*S-PRG Filler Technology Imparts Bioactive Anti-plaque benefits



Photographs courtesy of Prof. Koji Yamamoto of the ASAHI University



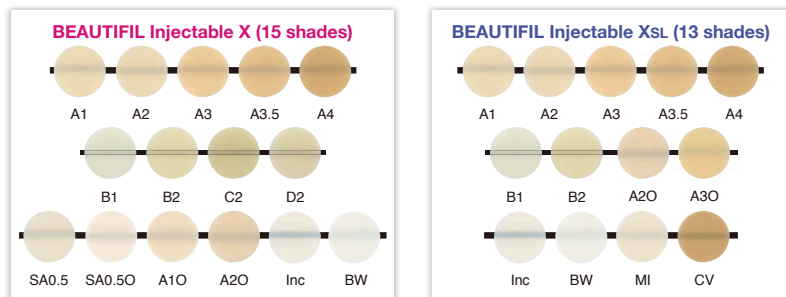
Restoration of Class IV with Beautiful Injectable X- Courtesy of Dr. Anand Narvekar

## Exceptional Aesthetics that Last

**BEAUTIFIL Injectable X** exhibits a high level of natural aesthetics with life-like shades that merge seamlessly with natural tooth for invisible restorations. Shades are stable with no shift in translucency pre-and post-cure.



### 3 Levels of Opacity to meet all clinical needs



The shades A1-D2 correspond to the VITA® Classical Shades.

- Opaque shades to mimic deep dentin opacity
- Universal shades for universal application
- Universal enamel to simulate translucency of natural enamel

### Inject as you shape



#### BEAUTIFIL Injectable X

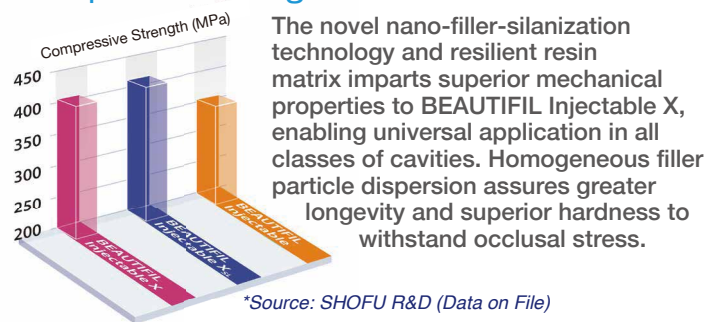
features an "Inject as you Shape" function with the same time-tested handling qualities of Beautiful Injectable to effortlessly create cusps, marginal ridges and conform to natural tooth anatomy.



High gloss observed post-cure (without polishing)

**BEAUTIFIL Injectable X & XSL** exhibit effortless polish to an unparalleled natural luster with self-polishing ability for lasting aesthetics with higher stain resistance.

### Exceptional Strength that Endures



The novel nano-filler-silanzation technology and resilient resin matrix imparts superior mechanical properties to BEAUTIFIL Injectable X, enabling universal application in all classes of cavities. Homogeneous filler particle dispersion assures greater longevity and superior hardness to withstand occlusal stress.

#### Restoration of multiple carious lesions in anterior aesthetic zone



PREPARE with Shofu Diamond Burs | INJECT to restore | FINISH & POLISH with OneGloss



BEFORE | AFTER

— Photograph courtesy of Dr. Anand Narvekar

#### Restoration of direct diastema closure



PREPARE with Shofu Diamonds Burs | INJECT to restore | FINISH & POLISH with Super-Snap



BEFORE | AFTER

— Photograph courtesy of Dr. Anand Narvekar

#### BEAUTIFIL Injectable X Syringe 2.2g

PN	STANDARD SHADE	PN	SPECIAL SHADE
Y2501	A1	Y2500	SA0.5
Y2502	A2	Y2510	SA0.50
Y2503	A3	Y2511	A10 (Opacious A1)
Y2504	A3.5	Y2512	A20 (Opacious A2)
Y2505	A4	Y2513	INC (Incisal)
Y2506	B1	Y2514	BW (Bleach White)
Y2507	B2	Beautiful Injectable X Syringe 2.2 gm Standard Shade ... \$55.55 Special Shade .....\$68.75	
Y2508	C2		
Y2509	D2		

#### BEAUTIFIL Injectable XSL Syringe 2.2g

PN	STANDARD SHADE	PN	SPECIAL SHADE
Y2521	A1	Y2530	A20 (Opacious A2)
Y2522	A2	Y2531	A30 (Opacious A3)
Y2523	A3	Y2535	CV
Y2524	A3.5	Y2534	MI
Y2525	A4	Y2532	INC (Incisal)
Y2526	B1	Y2533	BW (Bleach White)
Y2527	B2	Beautiful Injectable XSL Syringe 2.2 gm Standard Shade ... \$55.55 Special Shade .....\$68.75	

**Buy 5  
get 1 FREE**  
(same shade)



## The 2<sup>nd</sup> Generation Giomer Aesthetic Dental Restorative Material

**BEAUTIFIL II** the 2<sup>nd</sup> generation Giomer light-cure, fluoride releasing direct aesthetic restorative material was developed using S-PRG Technology (Surface Pre-Reacted Glassionomer) to provide superior aesthetics with excellent shade match, enhanced handling characteristics and anti-plaque effect while maintaining strength and durability.

### Predictable Aesthetics

**Create Indistinguishable restorations with optical characteristics of natural teeth...**

The **BEAUTIFIL II** filler structure has been developed to simulate the internal structure of natural teeth with ideal light transmission and optical characteristics.

The moderate translucency and light transmission of enamel combined with the light-diffusion of dentin offers predictable aesthetics with a close shade match to natural teeth.

### Versatility...

Excellent natural shade reproduction can be achieved with a chameleon effect, using a single shade that blends well with surrounding teeth making the restoration undetectable. In aesthetically demanding cases additional shades can be used to achieve exceptional results.

**BEAUTIFIL II** is available in 14 shades – A1, A2, A3, A3.5, A4, B1, B2, B3, C2, C3, Inc, BW and Opacious Dentin shades (A20, A30)

### Recommended Use of Shades

**Universal shades – A1, A2, A3, A3.5, A4, B1, B2, C2**

Designed specially for the single shade restorative technique

**Opacious Dentin shades – A20, A30**

Specially created for restoration with layering technique using multiple shades

**Enamel shade-Inc**

Unique Incisal shade with high translucency for aesthetically demanding cases

**Bleach White shade – BW**

Ideal for restoring bleached teeth

### Optimum Polishability

In addition to the S-PRG fillers discrete nano fillers (10~20nm) have been included in the filler structure of **BEAUTIFIL II** to obtain a filler load of 83.3 wt% for fast and easy polishing with an outstanding surface lustre which retains over time.

### Outstanding Handling Characteristics

Excellent handling has been achieved with the inclusion of nano particles making **BEAUTIFIL II** a user -friendly material that is easy to sculpt with no slump, non-sticky and wets preparation well with good thixotropic qualities.

Confidence starts here...



Photographs courtesy of Dr. Sushil Koirala

### Created for ...

Direct restorations that require optimum aesthetics and biocompatibility such as

- Direct cosmetic tooth modifications
- Restoration of Class III, IV, and V cavities
- Restoration of Cervical erosion and root caries
- Restoration of Class I and selective Class II cavities
- Repair of fractured incisal edges
- Laminate veneers and core build-up



Chemistry Behind Every Smile



Photograph courtesy of Dr. Sushil Koirala



The "One Touch Cap" of the syringe has been enhanced for easy dispensing and delivery during build-up of restoration.

### Recommended Use of Shades

**Universal shades – A1, A2, A3, A3.5, A4, B1, B2, C2**

Designed specially for the single shade restorative technique

**Opacious Dentin shades – A20, A30**

Specially created for restoration with layering technique using multiple shades

**Enamel shade-Inc**

Unique Incisal shade with high translucency for aesthetically demanding cases

**Bleach White shade – BW**

Ideal for restoring bleached teeth

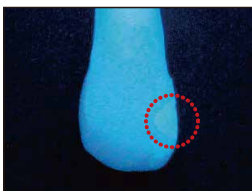
### Optimum Polishability

In addition to the S-PRG fillers discrete nano fillers (10~20nm) have been included in the filler structure of **BEAUTIFIL II** to obtain a filler load of 83.3 wt% for fast and easy polishing with an outstanding surface lustre which retains over time.

### Outstanding Handling Characteristics

Excellent handling has been achieved with the inclusion of nano particles making **BEAUTIFIL II** a user -friendly material that is easy to sculpt with no slump, non-sticky and wets preparation well with good thixotropic qualities.

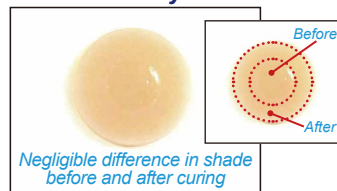
### Fluorescence close to natural teeth



### Exceptional Radiopacity



### Shade Stability



**BEAUTIFIL II**  
STANDARD Colours:-  
A1, A2, A3, A3.5, A4,  
B1, B2, B3, C2, C3  
each 4.5 gm **\$55.55**

SPECIAL Colours:-  
Inc, BW, A20, A30  
each 4.5 gm **\$68.75**



**BEAUTIFIL II 6 COLOUR SET**  
6 x Beautifil II Syringes, 4.5 gm  
A2, A3, A3.5, B2, A30, Inc,  
Dura-White Stone, Super-Snap Singles,  
OneGloss Trial Set & Paper Pad

**\$275.00 / set**



0322  
Composite  
Technique Kit CA  
12 pcs/box  
**\$88.55**

## SHOFU COMPOSITE POLISHERS CA



Shape	Bullet	Knife	Wheel	Disk	Cup	Pear	Inverted Cone	Midi
CompoSite Polisher RA Aluminium oxide (40 µm)	0191RA	0192RA	0193RA	0194RA	0195RA	0196RA	0197RA	0198RA
CompoSite Polisher FG Aluminium oxide (40 µm)						196BFG		0199FG
CompoSite Fine Polisher RA Zirconium (20 µm)	0291RA	0292RA	0293RA	0294RA	0295RA	0296RA	0297RA	0298RA
CompoSite Fine Polisher FG Zirconium (20 µm)						296BFG		0299FG

### Specification:

Available in two grits and 8 different shapes as follow:  
CompoSite Polisher – Aluminium oxide (approx. 40 microns)  
CompoSite Fine Polisher – Zirconium (approx. 20 microns)  
shank marked with colour band

**Indication:** For perfect polishing of anterior and posterior composite restorations without scratching surrounding tooth structure. Final polishing can be obtained easily without ditching the restorative material.

Composite  
Silicone Points  
RA/FG  
12 pcs/box  
**\$68.75**